

April Showers Bring May Flowers And More...

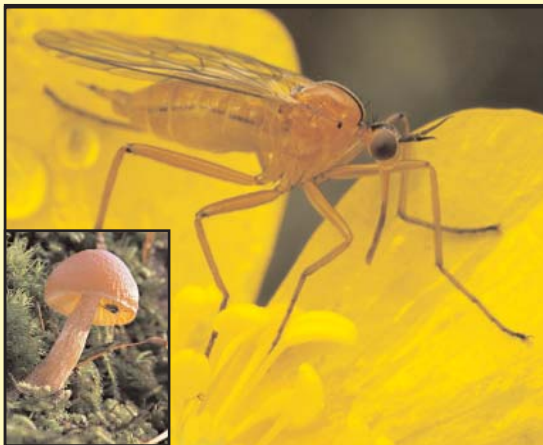


The record breaking rainfall this Spring has been at the very least inconvenient, but for some it was devastating; leaving people without heat and power, or living in hotels. Storms caused floods and downed trees damaging homes, cars and lawns. Although the debris from the storms has been cleared, we will continue to see the effects of this very wet Spring on your plants and properties as the year progresses.

The weather has created a perfect breeding ground for mosquitoes. Mosquitoes breed in standing water. One female mosquito can lay 100 to 300 eggs at a time and average 1,000 to 3,000 offspring during her life span. Areas like rain gutters, tree holes, empty flower pots, and old buckets containing stagnant water are breeding sites. Although you may have taken steps to clear your property of such standing water, you are subject to the actions or inaction of your neighbors, not to mention wetland areas in your community. Bug zappers can be used and citronella can also help, as it irritates the mosquitoes feet. An adult mosquito suppression plan may be appropriate based on your property.

Cool, wet conditions are also ideal for fungus. The most common fungus problems are discula, anthracnose, rust and powdery mildew. Plants most often affected by fungus are Dogwoods, Ash trees, Sycamore, Crabapple, Hawthorne and Lilac. The trick with fungus is to apply a protective fungicide *prior to the leaves becoming infected*. Increased sunlight and air movement can reduce the potential for fungus. Additionally, Rich-Roots pressure injected fertilizer can help trees combat fungus stress.

It is important to take *preventative* measures on your property for mosquitoes and fungus; then you can take time to "smell the roses" and enjoy the view.





Feature Foliage

Scarlet Oak (*Quercus coccinea*)

The Scarlet Oak is a fast-growing and tolerant tree. Its leaves are glossy deep green on top and paler green below, turning scarlet in fall. The crown is open and rounded, providing light shade and thus is a good tree where grass is desired. It is much like the Pin Oak but is “cleaner” without the downward tangle of low branches. It is a tree just right for that open grassy spot.

NEW LAW...Protecting the consumer and professional tree care providers

The "**Tree Expert and Tree Care Operators Licensing Act**" was signed on January 7, 2010. It was the culmination of an eight-year effort aimed at professionalizing the tree care industry in New Jersey. Tamke had worked closely with the State Board of Tree Experts and other professional arborist organizations to achieve this long overdue consumer protection and worker safety legislation.

In general terms, under the act, *only a licensed company will be able to provide arboricultural services for trees 6" or larger in diameter.* The "Expert" credential can provide the most technical operations. This includes: cabling and bracing, tree injection, hazard tree analysis, air spading, lightning protection installation and all other arboricultural services. Tree Care "Operators" can only perform the most basic tree removal and pruning. Tamke has always had credentialed arborist. Over the next year, the Board of Tree Experts, now expanded to nine members, will map out the specifics of the law. Tamke will continue to be an active player in this design.

706 Martinsville Road
PO Box 251
Liberty Corner, NJ 07938-0251



PRSRT STD
US Postage Paid
Liberty Corner, NJ
Permit #15